

LIVE

EDUCATIONAL SEMINAR

MISTAKE PROOFING
YOUR PROCESS



1

SEMINAR SPEAKER



ZACK ZURBEY

Plant Manager
Atlas Manufacturing

2

ATLAS
PRECISION SHEET METAL SOLUTIONS

SHAPING THE METAL BEHIND YOUR BRAND

MISTAKE PROOFING YOUR PROCESS
ZACH ZURBEY

3

Atlas Manufacturing

ATLAS
PRECISION SHEET METAL SOLUTIONS

- Precision Sheet Metal Fabricator
 - In-house Powder Coat
- 100 person staff
- 60,000 sq ft. facility
- Located in the heart of Minneapolis



4

Daily Ops Meeting



Captive nut
should be here!



5

Tool Box

- DMAIC
- Process Mapping
- SIPOC
- Histogram
- Run Charts
- Normal Distribution
- COPQ
- Hypothesis Testing
- Regression Analysis
- Kaizen



6

The Approach

We tend to seek solutions that are complex.

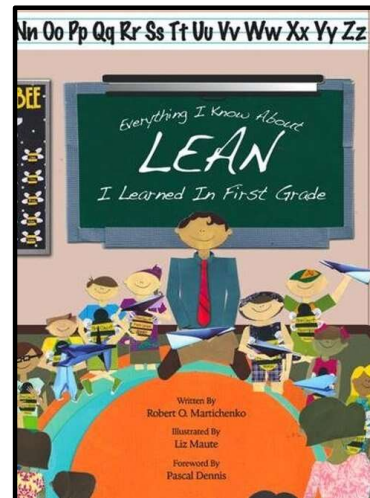
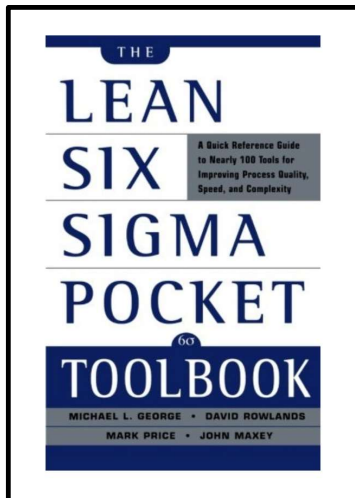
Can our bias get in the way?

How do we refocus to drive engagement at all levels?



7

Simplify



8

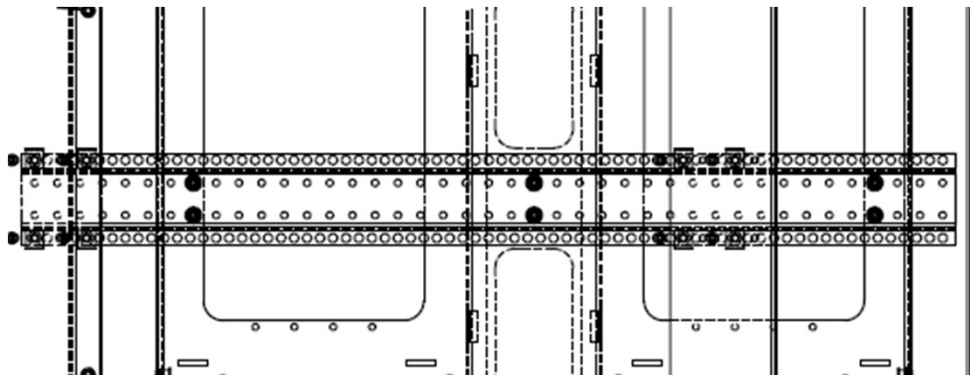
Why Did the Problem Occur?

Root Cause



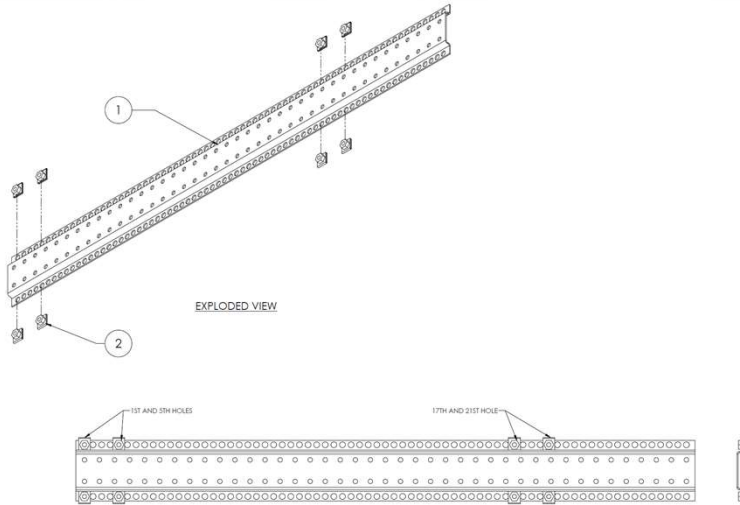
9

The Start



10

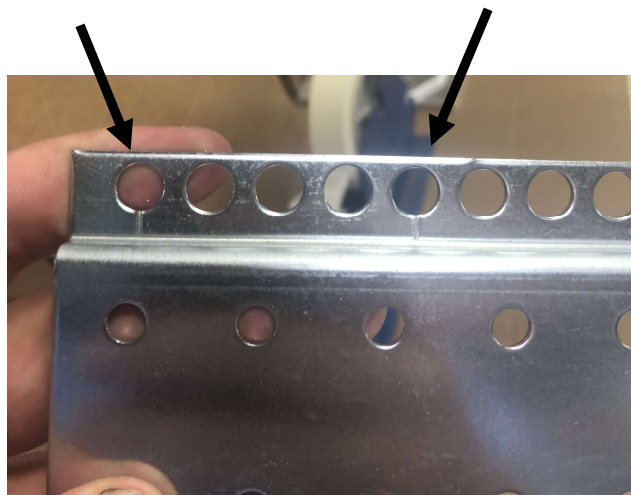
Improvements



- Create a check fixture that overlays the part, go – no go
- Hold an example

11

The Solution



12

The Result



1. Elimination of counting

- Opportunity for mistake eliminated

2. Visual cue

- Easy to execute
- Easily verified

3. Measurable Benefits

- Throughput
- Quality
- Efficiency

13

Continuous Variable Verses Discrete



**Several measurements
combined into a single
Go / No-Go**



14

Lessons Learned



- **Impact to culture**
 - Error proofing should be simple
 - Simplicity drives success
 - Success leads engagement
 - Engagement causes multiplication

Arrive at a point where your organization doesn't just attempt to put error proofing measures in place, but everyone bottom up demands it!

15



Zach Zurbey, Plant Manager
zach.zurbey@atlasmg.com

16